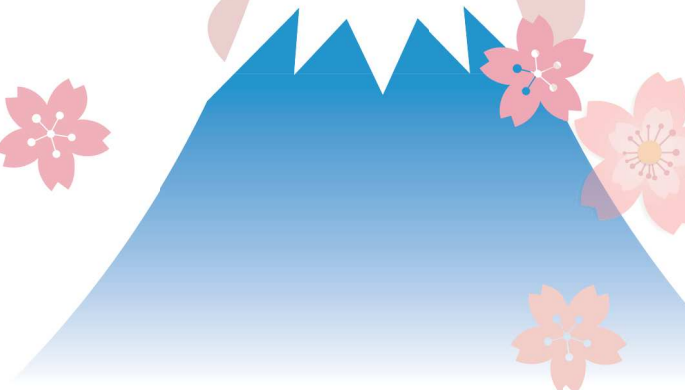


埼玉ブリエ日本語学校
Saitama Briller Japanese language school



公式 HP
<https://www.saitama-briller-jls.jp/>



One-stop real estate and home services
with the aim of creating happiness for customers

- 狭山不動産 狭山店
- アバマンショップ狭山店
- 健康住宅
- R+house 狭山店
- 見逃しの家
- 狭山不動産 総務・経理
- アップルホーム 本社
- テクノストラクチャー
- R+house 狭山台モデルハウス
- プレイハウス
- 狭山不動産 仲介・買取センター
- アップルホーム アフターサービス
- LIXILリフォームショップ狭山

■ R+house
飯能美杉台モデルハウス

飯能市

入間市

狭山市

川越市

■ LIXIL リフォームネット川越
■ R+house 川越南店

所沢市

■ 狭山不動産 入間店
■ アバマンショップ入間店

■ 狭山不動産 所沢店

Major Bank
Mitsubishi UFJ Tokyo Bank,
Saitama Resona Bank,
Sumitomo Mitsui Banking Corporation,
Mizuho Bank,
Musashino Bank and others



Greeting



President
Nobuyuki Ito

Since its inception in 1979, the Sayama Real Estate Group has been aiming to be a company that can communicate with local residents with the theme of "Comfortable City Planning" centered in the western part of Saitama Prefecture. Our main businesses are Houses built for sale, Condominiums for sale, custom homes, Real Estate Sales, Real Estate Purchases, and Rental Brokerage and management. In addition, we have realized a one-stop service of real estate housing from real estate consulting, investment properties, nursing care and welfare business, renovation. "If you consult with the Sayama Real Estate Group, you can solve any real estate problems." We aim to be the No.1 reliable partner in the region.

- 

-

-

-

-

-
- A photograph of a modern, white, single-story house with a large black-framed window and a small entrance. The house is surrounded by greenery and other residential buildings in the background.

- Healthy housing
- Techno structure
- R+house

Saitama Briller Japanese Language School = SBJ

Achieve Advanced Japanese Language skills

To prepare for the Japanese University selection test, it is first necessary to acquire the N2 level of the Japanese Language Proficiency Test (JLPT).

Students are required to acquire elementary-intermediate-advanced and advanced Japanese proficiency according to the students' abilities in order to achieve Japanese University acceptance. International students should acquire advanced Japanese Language Proficiency by the spring of the following year in order to pass university, and achieve university success.

University Exam Preparation

It is necessary to provide guidance according to each student's aspirations.

Teachers who have a track record of university entrance guidance offer individual preparation classes to support international students firmly.

1. Interview

Interview examinations are used in almost all selection examinations for international students. In interview test, you need to be able to express in Japanese what you want to study at your chosen university and undergraduate department and how you want to use it in the future. In addition to expressing your enthusiasm for going on to the university, you will be taught to express your ideas accurately.

2. Essay

More and more universities are using essay exams each year to confirm the ability of international students to compose sentences in Japanese. There are several essay tests, but in each case, it is often the case that after a certain situation is shown, an opinion on the situation is sought. Students will learn the composition and writing skills to logically convey their opinions and assertions.



Principal
熊川 清孝 Kiyotaka Kumakawa

Graduated from Waseda University
 • Former Director of Nippon Kogakuin College, Hachioji College of Nippon Kogakuin
 • Former Principal and Director of Bunka Kagakuin
 • Former Director and Former General Manager of SHOKURYO GAKUIN
 • Former Principal of Active(Actors School)
 • Former Director of Hanshin Automobile and Aviation College
 • Former Director, Foundation for the Promotion of Image and Arts Director
 • Class Japan Educational Organization Director
 • NPO Youth and Girl Motorsports Promotion Board Member
 • Japan Academy Awards Association



Chief
Sonoda - Teacher
14 years of teaching experience
Kyorin University Graduated



Teaching staff
Yokokawa - Teacher
8 years teaching experience
Nihon University Graduated



Teaching staff
Yoshida - Teacher
2 years teaching experience
Waseda University Graduated



Secretariat
Degawa - Secretary General



Japanese language institution Establishment Permit

China Inner Mongolia Office



Bao Xiaoguang
 • Inner Mongolia Akamine Academy Graduated from Art Education
 • Tokyo Gakugei University Art Education Woodworking Master's degree

China Inner Mongolia Office



A Rong
 • Inner Mongolia Normal University Graduated in mathematics
 • Chiba University Mathematics / Information Mathematics Graduate from graduate school

Vietnam Hanoi Office



Luu Thi Ha
 • Hanoi University Graduated from School of Japanese Language
 • MOMOYAMA GAKUIN University Graduated from School of Social Sciences

Nepal Office



Naresh Basnet
 • Namuna Machhindra University Graduated
 • Shinjuku College of Information technology Graduated
 • SANNO University graduate School Completion(MBA)

China Hangzhou Office



Wang Yang
 • Zhejiang University Graduated from Computer Science
 • Tokyo Fuji University Graduated from Graduate School of Economics



School Building Exterior



Classroom A



Classroom B



「所沢」駅へ 11分	From Sayamashi Station
西武新座線急行利用	To Tokorozawa Station 11 Minutes
	Use Seibu Shinjuku Line Express
「池袋」駅へ 37分	To Ikebukuro Station 37 Minutes
西武新座線急行利用、「所沢」駅で西武池袋線急行に乗り換え	Use Nishi-Shinjuku Line Express at Tokorozawa Station
	Transfer to Seibu Ikebukuro Express Line
「西武新宿」駅へ 45分	To Seibu Shinjuku Station 45 Minutes
西武新座線急行利用	Use Seibu Shinjuku Line Express
「本川越」駅へ 9分	To Honkawagoe Station 9 Minutes
西武新座線急行利用	Use Seibu Shinjuku Line Express
「秋葉原」駅へ 67分	To Akihabara Station 67 Minutes

Name of facility
Saitama Briller Japanese Language School
 Address
Postal code : 350-1306
1-14-15 Fujimi, Sayama-shi, Saitama-ken, JAPAN
 TEL +81-4-2941-6951
 FAX +81-4-2941-6981
 Access
9 minutes walk from Sayamashi Station on Seibu Shinjuku Line



Kawagoe Kurazukuri Townscape



Irumagawa River



Sayamashi Station West Exit



Cycling Road



Career guidance

	Spring Semester			Summer Semester			Autumn Semester			Winter semester		
	April	May	June	July	August	September	October	November	December	January	February	March
			Examination for Japanese University Admission for International Students EJU (1st)	Japanese Language Proficiency Test JLPT (1st)				Examination for Japanese University Admission for International Students EJU (2nd)	Japanese Language Proficiency Test JLPT (2nd)			
							Private University / Vocational School Entrance Examination			National Public University Entrance Examination		
Admission Event	● Graduate School entrance examination briefing On-campus Admission briefing session	SBJ Admission Briefing Session				● Selected School Recommended Selection School in SBJ					● On-campus Briefing Session (for students enrolled in the next year)	
Admission Support		Examination for Japanese University Admission for International Students Japanese Language Proficiency Test Measures lesson (Each test capture class + practice test)					Examination for Japanese University Admission for International Students Japanese Language Proficiency Test Measures lesson (Each test capture class + practice test)					
	Graduate course											
Admission Support Program		Class Course Interview (Consider of Admission)			Class Course Interview (Consider of Admission)							
	Study abroad test / University Entrance Examination preparation course Course Subject: Japanese (Listening, Listening Comprehension, Reading Comprehension, Character Vocabulary, Description)											
							Japanese Language Proficiency Test Strengthening Class					
							University / Vocational School Entrance Examination Interview Guidance					

Class Curriculum

Preparation for Studying Japan / JLPT / EJU

1 2 Years Course (April Admission) Starts with Elementary Level of Japanese (1,600 hours or more)												
2 1 Year and 6 Months Course (October Admission) Starts with Japanese at the beginning Level (1,200 hours or more)												
Apr.	May	Jun.	Jul.	Aug.	Sep.	Oct.	Nov.	Dec.	Jan.	Feb.	Mar.	
1 Start Beginner I			Beginner II			2 Start Intermediate I			Intermediate II			
Apr.	May	Jun.	Jul.	Aug.	Sep.	Oct.	Nov.	Dec.	Jan.	Feb.	Mar.	
Intermediate III			Advanced I			Advanced II			Advanced III			

■ Class Time

Monday to Friday 20 hours per week

9:10-12:40 (Morning Class), 13:00-16:30 (Afternoon Class)

■ Learning Items

Grammar, Reading Comprehension, Conversation, Listening Comprehension, Notation, Composition, Vocabulary, Japan Circumstances, Preparation for EJU and proficiency test, Japanese culture

■ Learning Objectives

Pass the Japanese Language Proficiency Test N1 / N2 Admission to Japanese Universities, Graduate Schools and Vocational Schools

Training of Japanese Language Skills necessary for studying after admission

Consideration of Japanese culture and company

■ Learning Objectives

Beginner I / II (6 Months)	For those who have started learning Japanese, Develop Basic Japanese skills. They shall be able to speak, read and write simple sentences necessary for daily life. N5 to N4 Level
Intermediate I / II (6 Months)	For beginners who have completed Japanese Language study. Develop the basic skills necessary for General Conversation Skills and sentence comprehension. Develop the ability to read, write, and talk about general matters at the N3-N2 Level
Intermediate III Advanced I (6 Months) Advanced II/III (6 Months)	Our aim is to prepare for Japanese Universities, Graduate Schools and Vocational Schools, and to acquire the Japanese Language Skills necessary for studying after entering into the university. N2 to N1 Level Develop the ability to read, write, and talk about general matters at the N3-N2 Level

If you acquired the Japanese Language Proficiency Level N1, N2 College Entrance Exams have an advantage!

Exam Contents	University Name
N1, Interview, Essay, etc.	Waseda, Chuo, Daito Bunka, Teikyo, Tokyo Fuji
N1, Interview	J. F. Oberlin, Musashino, Asia, Jobu, Ryutsu Keizai
N1, Interview, Practical Skills	Musashino Art, Tokyo Polytechnic
N2, Interview, Essays etc.	Shobi Gakuen, Seigakuin, Surugadai, Sapporo International, Josai International, Yamanashigakuin, Japan Institute of the Moving Image, Hollywood Graduate School, Kaishi Professional, Ashikaga, Higashi Nippon International, Nihon Wellness Sport, Edogawa, Nagoya Keizai, Niigatakogotanki

※ This information is subject to change. Please check with your Class Teacher.

Saitama Briller Japanese Language School (SBJ) has many partner schools, and those with excellent grades can go on to recommendation. From the time of enrollment, until you decide where to go, you will have personalized career guidance, such as career counseling, interview practice, how to write an application, and preparation for exam questions. We also take measures for the Japanese Language Proficiency Test and the EJU. Sometimes we actually go to a briefing at a university or vocational school or have a special class at SBJ.

SBJ Alliances / Co-operation / Preferred Schools

University

Musashino University



《Ariake Campus》
3-3-3 Ariake, Koto-ku, Tokyo
TEL: 03-5530-7300
《Musashino Campus》
Shinmachi 1-1-20, Nishitokyo-shi, Tokyo

Full undergraduate organization. It has 11 faculties, and the field of learning covers the humanities, science, and medical fields. There are many attached laboratories.

《Faculties》
Faculty of Education, Faculty of Management, Faculty of Economics, Faculty of Psychology, Faculty of Law, Faculty of Literature, Faculty of Pharmacy, Faculty of Engineering, Faculty of Global Studies, Faculty of Human Relations, Faculty of Nursing, Faculty of Data Science

Depending on the result of the EJU, it will be a document verification and an interview only

Asia University



《Campus》
5-8 Sakai, Musashino-shi, Tokyo
TEL: 0422-36-3273

Formerly the Koa Senmon Gakko, founded in 1941, it became Asia University in 1955. It focuses on English education. There is an e-learning system. There is also a common program for four faculties in economics, management, law and international relations that aims to develop human resources that will serve as a bridge between Japan and China.

《Faculties》
Faculty of Business Administration, Faculty of Economics, Faculty of Urban Creation, Faculty of International Relations, Faculty of Law

Depending on the result of the EJU, it will be a document verification and an interview only

Niigata kogyo Tanki University



《Niigata Campus》
5-13-7 Kamishinhecho, Nishi-ku, Niigata
TEL: 025-269-3174

It was established in 1968 as Tokuto College of Technology. Focusing on training auto mechanics. Currently, it is the only automobile industry college in the Shin-Etsu region. The automobile department is thriving and won the 1st place in the student category at 1998 Honda Econo Power.

《Department》
Automotive Industry Department

Tuition fee reduction

Shobi University



《Kawagoe Campus》
1-1-1 Toyoda-cho, Kawagoe, Saitama
TEL: 0120-80-0082

The campus has a music hall, a video studio, a recording studio, etc., and the facilities and environment are enriched. Circle activities are also active. The Football club and kendo club have been successful, and the women's clubs such as the women's rigid baseball club, women's Football club and women's cheer dance club have been remarkable.

《Faculties》
Faculty of Arts and Information, Faculty of Policy Management, Faculty of Sports Management

Students with excellent grades will be exempted from half the admission fee and will be required only for document screening and interview based on the results of the EJU.

Nagoya University



《Hagashiyama Campus》
Furo-cho, Chikusa-ku, Nagoya, Aichi
TEL: 052-789-5765
(Directly to the entrance examination section of the Education Promotion Department)
(Daiko Campus)
1-20 Daikominami, Higashi-ku, Nagoya, Aichi

Established in Meiji Era 4 (1871). Common subjects across all faculties (Basic seminars, specialized basic subjects etc.) are established, the aim is not only to acquire advanced expertise but also to develop human resources with comprehensive and independent judgment and rich humanity.

《Faculties》
Faculty of Literature, Faculty of Law, Faculty of Economics, Faculty of Agriculture, Faculty of Education, Faculty of Informatics, Faculty of Science, Faculty of Engineering, Faculty of Medicine

High-grade students recommended by designated school

J. F. Oberlin University



《Vachida Campus》
3758 Tokiwamachi, Machida, Tokyo
TEL: 042-797-1583
(Shinjuku Campus)
3-23-1 Hyakunin-cho, Shinjuku-ku, Tokyo

The university's roots extend to Oberlin High School, founded in 1888. Under the philosophy of developing international human resources based on Christianity, there are language education in 18 languages and over 160 affiliated schools and institutions overseas.

《School Group》
Liberal Arts Group, Global Communication Group, Business Management Group, Arts and Culture, Health and Welfare Group

50% Tuition Fee Exemption

Meiji University



《Surugadai Campus》
1-1 Kanda Surugadai, Chiyoda Ku, Tokyo
TEL: 03-3296-4138
(Jumi Campus)
1-4-1 Eifuku, Suginami Ku, Tokyo

1881, the predecessor of Meiji Law School has contributed significantly to the development of a society based on human education centered on the philosophy of "rights and freedoms" and "independence and autonomy".

《Faculties》
Faculty of Law, Faculty of Commerce, Faculty of Political Economy, Faculty of Literature, Faculty of Management, Faculty of Information and Communication, Faculty of Science and Technology, Faculty of Agriculture, Faculty of International Japanese Studies, Faculty of Integrated Mathematical Science

There is a full tuition waiver

Daito Bunka University



《Headquarters Itabashi Campus》
1-9-1 Takashimadaira, Itabashi-ku, Tokyo
TEL: 03-5390-7800
(Directly to the admission center)
(Higashimatsuyama Campus)
560 Iwadono, Higashimatsuyama-shi, Saitama

Under the philosophy of "building a new culture by integrating East and West cultures," we have worked to foster truly international people with deep culture as a base of knowledge where cultures intersect. As a comprehensive university with 8 faculties and 20 departments, we conduct individual education and research.

《Faculties》
Faculty of Literature, Faculty of Economics, Faculty of Foreign Languages, Faculty of Law, Faculty of International Relations, Faculty of Business Administration, Faculty of Sociology, Faculty of Sports and Health Science

High-grade students receive a scholarship of 300,000 yen. 20% tuition fee exemption. N2 level students can take the essay and interview only

Ashikaga University



《Omoe Campus》
268-1 Omoecho, Ashikaga City, Tochigi
Tel: 0284-62-9982
(Honjo Campus)
3-2100-1 Honjo, Ashikaga City, Tochigi

International exchange is thriving, and it has a sister school tie-up with the University of Illinois at Springfield in the United States and Zhejiang University of Technology in China. The site is approximately 12,000 square meters and is equipped with wind turbines, biotopes (simulated ecosystems), and triple hybrid power generation systems, and is conducting field experiments on clean natural energy that does the environment.

《Faculties》
Faculty of Engineering, Faculty of Nursing

Tuition 210,000 yen + 210,000 yen reduction and exemption

Higashi Nippon International University



《Iwaki Campus》
37 Azavotobuki Kanazawa, Tairakamata, Iwaki-shi, Fukushima
TEL: 0120-963-323

A 24-hour campus network allows access to all computer resources from the training room, self-study room, laboratory, library etc.

《Faculties》
Faculty of Economics and Management, Faculty of Health and Welfare

50% tuition fee exemption

Edogawa University



《Chiba Campus》
474 Komagaki, Nagareyama-shi, Chiba
TEL: 0120-440-661

While responding to the mission of education since its inauguration, "internationalization and computerization" acquisition of "full of human kindness, universal culture, and expertise required by the times", aim to develop human resources who can find pleasure in social contributions as professionals. It focuses on information education and international education, such as free lending of the latest laptop computers, language classes, and overseas training.

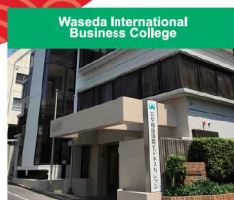
《Faculties / Department》
Faculty of Sociology / Department of Human Psychology, Contemporary Sociology, Department of Management Sociology/Faculty of Media and Communication / Department of Mass Communication, Department of Information and Culture, Department of Child Communication

Employment (After going to university in Japan)



SBJ Alliances / Co-operation / Preferred Schools

Vocational school



2-1-27 Nishiwaseda, Shinjuku-ku, Tokyo

《Qualification》
Business skills, IT skills, Illustrators, Designers

High-grade students have a scholarship of up to 490,000 yen



23-10 Chuo, Konosu-shi, Saitama

《Qualification》
Care worker

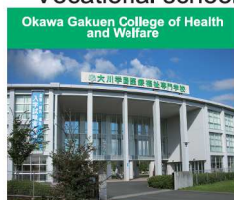
High-grade students are recommended by designated school (interview only). There is a subsidy system of 1.68 million yen from Saitama prefecture. 100% employment rate.



2-8-9 Minami Ikebukuro, Toshima-ku, Tokyo

《Qualification》
Social Worker, Mental Health Worker (Communication)

High-grade students are recommended by the principal. 100,000 yen scholarship payments. There are also scholarships that exempt all tuition fees.



345 Shimokaji, Hanno-Shi, Saitama

《Qualification》
Care Worker, Judo Reduction Teacher

Highly qualified students are recommended by the designated school, exempt from the examination fee, and have a subsidy of 1.68 million yen from Saitama Prefecture. Can work for nursing homes and hospitals. Employment rate 100%.



2-10-21 Hiroshima, Miyazaki-shi, Miyazaki

《Qualification》
Tax accountant, animal nurse, instructor mechanic

Tuition fee reduced by 120,000 yen



1-11-4 Otemachi, Maebashi-shi, Gunma

《Qualification》
Cook, Travel Geography Test, Hotel Business Skill Test, Restaurant Service Skill Test, All Bookkeeping Levels 2.3

Partial tuition exemption in case of recommendation. Employment possible at hotels or travel agencies



1-10-15 Minamicho, Chuo-ku, Chiba-shi, Chiba

《Qualification》
Japanese Teacher, Secretary Skills Test, Trade Business Test, Book Keeping

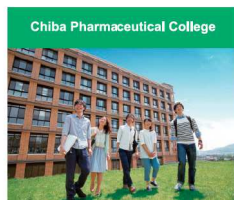
Excellent grades have a tuition reduction and exemption system, with a employment rate of 97%



2120 Kamigo, Kaminokawa, Kawachi-gun, Tochigi

《Qualification》
Auto mechanics

High-grade students have a tuition fee reduction of 250,000 yen



5-13-6 Tsudanuma, Narashino-shi, Chiba

《Qualification》
Pharmaceutical registered seller

Can work for a drugstore or over-the-counter drug company



410 Baba, Sakura-shi, Tochigi

《Qualification》
Clinical Engineer, Paramedic, Care Worker



4-5-2 Osaki, Shinagawa-ku, Tokyo

《Qualification》
Dressmaking Skill Test, Fashion Business Ability, Clothing School Teacher Certification



1-3-2 Ueno Higashi, Ogose, Iruma-gun, Saitama

《Qualification》
Auto mechanics

The automobile maintenance department has a subsidy system of up to 600,000 yen per year

Q&A

Q. Tell us about the Japanese higher education system.

A. Higher education in Japan starts after 12 years of primary education (6 years of elementary school) and secondary education (3 years of junior high school and 3 years of high school). There are five types of higher education institutions that international students can enter: 1. Colleges of Technology, 2. Vocational Schools, 3. Junior Colleges, 4. Universities and 5. Graduate Schools.

Q. What is the difference between universities and vocational schools?

A. Universities (undergraduate), junior colleges, and vocational (professional) schools are all higher education institutions that require high school graduation, but the term of study, acquired degrees and qualifications, educational content, different for each institution. Universities (Undergraduate): all are 4 years except 6-year medical, dental and veterinary medicine. Upon graduation, a bachelor's degree (Bachelor) is obtained. Junior College: The title of Junior College (Associate Degree) is obtained in two years. Vocational school: Often referred to as a "vocational school", it is mainly a two-year education system and can earn the title of Diploma. In general, universities undergraduate schools) focus on acquiring knowledge and culture as well as specialized knowledge, while vocational schools offer practical skills in fields such as business practice, welfare, medical care, industry, culture, and fashion. Vocational education and specialized technical education are provided.

Q. University and vocational school entrance procedure

A. You will study Japanese well before you enter a vocational school. April admission is common, but some schools adopt September or October admission. There are also schools that recruit students for April enrollment several times. Many schools offer their own written examinations and interviews in addition to submitting the results of the EJU * and the Japanese Language Proficiency Test.

Q. What are the qualifications and conditions required to enter a university or vocational school?

A. The main qualifications and conditions required for studying at a vocational school are as follows.
• A person who has at least 18 years old of education with a minimum of 12 years of education
• A person who has financial ability to cover study abroad expenses
• Persons with qualifications equivalent to Level 2 of the Japanese Language Proficiency Test (JLPT) *

* Japanese language proficiency levels vary depending on the school, but in general, proficiency equivalent to Level 2 of the Japanese Language Proficiency Test (JLPT) is required. Depending on the school, it may also be accepted that studying in Japan, getting Examination for Japanese University Admission for International Students (EJU) grades, Test of Practical Japanese (J-TEST) and Business Japanese Proficiency Test (BJT). Degree courses in English do not require Japanese language proficiency, you may be required to submit grades such as TOEFL instead.

* The Examination for Japanese University Admission for International Students (EJU) is held every June and November.

Q. What types of scholarships are available?

A. SBJ has its own scholarship. Even for students who have advanced from SBJ, each school has set up a scholarship system that students can independently pay, or a tuition reduction or exemption system (a system that exempts part or all of the entrance fee and tuition fee). In general, it is for students who have difficulty paying for financial reasons and have good grades. Details of the system, such as the application period, vary from school to school, so please contact the school directly for details.

Scholarship

《Scholarship for International Students》	in thousands yen
Monbukagakusho Honors Scholarship for Privately-Financed International Students	48 / month
Rotary Yoneyama Memorial Scholarship	100 to 140 / month
Heiwa Nakajima Foundation Scholarship	150 / month
Ikuikai Scholarship	35 / month

《Scholarship for International Students》	in thousands yen
Full-time award (Attendance rate 100% every six months)	5 to 20
Attendance award (98% attendance every six months)	3 to 12
Principal Award (100% attendance rate during enrollment period)	10
the Japanese Language Proficiency Test N1	Maximum 120



Alumni's Voice

I have been studying at SBJ since 2019. Although I could speak a little Japanese, I did not take any exams and did not know the kanji.

Thanks to the teachers who systematically provided lessons and guidance for advancement, I was able to pass N2 in the exam in July 2019 six months later. In addition, I was able to pass the schools of interest to Asia University and Daito Bunka University. Thank you for your detailed guidance, such as how to write a college application, how to apply on the Internet, and practice interviews. I was also introduced to scholarships and student loans. Currently, I am studying N1 and Kanji test, computer and English with the support of teachers. I'm really glad that I entered this school.

December 20, 2019
Hossain Tanzania



Application Requirements

Eligibility :

Those who have completed school education for 12 years or more, or have equivalent qualifications

Enrollment period :

April, October

Application period :

April semester : October of the previous year ~ Early December
October semester : April ~ Early June



Expenses to be paid upon enrollment (consumption tax 10% included / As of October 2019)		
	2 years course	1 year 6 months course
Year 1 expenses	812,900 yen	812,900 yen
Dormitory fee for 6 months (4 person room)	120,000 yen	120,000 yen
Total	932,900 yen	932,900 yen

※Living in the dormitory for at least 6 months is required.
Dormitory fee is included in the Expenses required at Enrollment.

Cost Details

	2 years course		1 year 6 months course	
	First year	Second year	First year	Second year
Selection Fee	22,000 yen	-	22,000 yen	-
Admission Fee	55,000 yen	-	55,000 yen	-
Tuition Fee	686,400 yen	686,400 yen	686,400 yen	343,200 yen
Material Fee	49,500 yen	49,500 yen	49,500 yen	24,750 yen
Extracurricular Activities				
Equipment Costs				
Total	812,900 yen	735,900 yen	812,900 yen	367,950 yen

Dormitory

1 Room for 2 ~ 4 persons type

Dormitory fee

20,000 ~ 30,000 yen / per month

- * Free entry fee, deposit, etc.
- 12 minutes walk to school, 17 minutes walk to station

Capacity

1 room 2 people ~ 4 people 10 rooms

Equipment

Bunk bed, air conditioner, refrigerator, microwave oven, rice cooker, IH stove, washing machine, Internet Wi-Fi free

- * The first three months' dormitory fee will be transferred along with the admission fee
- * Utility bills are contracted individually by the room representative



1 Room Per Person type

Dormitory fee

40,000 yen / per month

- * Free entry fee, deposit, etc.
- 9 minutes walk to school, 4 minutes walk to station

Capacity

5 rooms per person per room

Equipment

Bed, air conditioner, refrigerator, microwave oven, rice cooker, IH stove, washing machine, Internet Wi-Fi free

- * The first three months' dormitory fee will be transferred along with the admission fee
- * Utility bills are contracted individually by the room representative



※If you have any other room you want, a shop of the Sayama Real Estate Group will help you find a room.

Required documents and submission Schedule

Necessary documents *Japanese translation is required for all documents

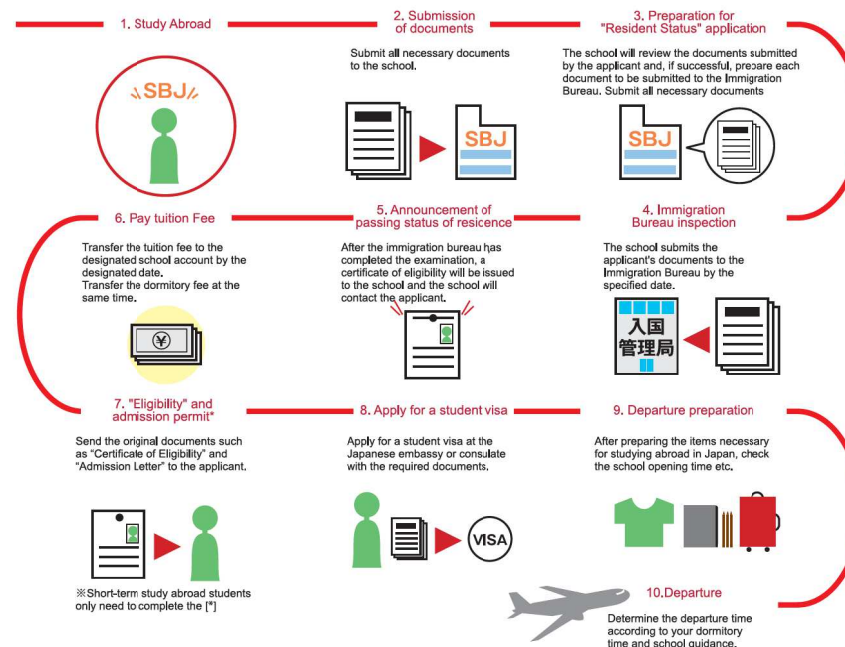
- Admission application, resume, reason for enrollment
- Original diploma or certificate of expected graduation with final education
- Educational certification document * China
 - National high school student information consultation vocational guidance center
 - Original certification report of educational background etc. issued from either the Faculty of Education degree or Research Student Education Development Center
- Final Academic Record
- Japanese Language Proficiency Certificate
 - Proof of studying Japanese (more than 200 hours)
 - Certificate of Japanese Language Proficiency Test N5 or higher
 - Pass certificate of NAT Test, J Test, etc.
 - Other proof of Japanese Language ability
- Documents certifying the applicant's background (such as a resident's card showing the family)
- Expense support letter, sponsor's family list, resident card with family details of sponsor

- Certificate of deposit balance, copy of passbook, or 3 years of bank account details
- Employer's certificate of employment (original employment certificate or business license or company transcript)
- 3 years of certificate of income of the sponsor, 3 years of tax certificate of the sponsor
- Copy of passport, 3 photos (4cm x 3cm) make sure to write your name on the back

Schedule

	April Admission	Oct Admission
1. Acceptance of application	August to September	February to March
2. Interview / Selection	September to October	March to April
3. Collection of required documents and translation into Japanese, application form	October	May
4. Submit application form to Tokyo Immigration and Resident Management Bureau	November	May

Schedule until admission



Q & A about living in Japan

Q. What is the difference between a research student and a graduate student?

A. Research students are those who study at the graduate school or undergraduate based on their own research theme, and are not eligible for awarding a degree. (Students and auditors are also not subject to degree importance.) Many research students are pursuing graduate schools and aiming to obtain master's and doctoral degrees.

Q. How to enroll in graduate school

A. For both master's and doctoral courses, most universities set the admission period in April, but some schools use fall admission in September and October and other admission periods. The application / admission period varies depending on the graduate school, but in the case of admission in April, it seems that the application is usually conducted from autumn to March of the following year. In some cases, recruitment for April admission may be divided into two sessions. Many schools have their own selection tests.

Q. Does SBJ have support for going to graduate school?

A. Support for graduate schools requires special experience and abilities of teachers, but SBJ also provides guidance on going to graduate schools.

Q. How much does tuition for a university and others cost?

A. Tuition fees are lower for National government schools than for private schools. For private schools, please note that tuition fees vary greatly between major at the same school. Privately funded international students can also take advantage of tuition reduction. The following is an estimate of the annual tuition fee for each school type.

in ten thousands yen

School	Tuition (Annual Fee)	Admission Fee(*)
Private University Foreign Students	50 to 130	-
University (Faculty)	National Government	50 to 55 15 to 30
	Private	90 to 370 25 to 200
Graduate School	National Government	50 to 55 15 to 30
	Private Literature	55 to 100 20 to 25
	Private Science	60 to 130 25 to 25
Vocational school	80 to 130	15 to 30

※ Payment of the entrance fee is only for the first grade (Admission).

Q. How much does living cost?

A. The average monthly expenditure for privately funded international students studying at university is 138,000 yen, including housing and tuition fee payments. However, keep in mind that this amount is an estimated living expenses, and the amount varies greatly depending on the type of housing (renting an apartment or living in a dormitory) and the area where you live.

Reference : Monthly living expenses 80,000 yen (rent 30,000 yen, food expenses 30,000 yen, electricity 8,000 yen, insurance 2,000 yen, other 10,000 yen)

Q. Can international students do part-time job?

A. An international student who wishes to work part-time may study at a school if he / she obtains a "non-qualified activity permit" at the Regional Immigration Bureau that governs his/her residence. It is possible to work part-time. Part-timers have time and content restrictions. With regard to hours, less than 28 hours a week on the original side, and long-term leave periods for educational institutions such as summer vacations are less than 8 hours per day (up to 40 hours a week). Regarding the contents, working in a business related to amusement business is prohibited by law. Violation of these may result in forced deportation. It seems that there are many types of jobs such as Restaurant business, sales, and supermarket cashiers. The hourly wage varies depending on the region, but for the Restaurant business, the standard is 900 to 1,100 yen.

Q. How do you find the part-time job?

A. SBJ provides a variety of part-time jobs' information and has the assistance. Public Employment Security offices (Hello Work) websites and part-time job information sites nationwide are also available. In the case of international students, they seem to be referred to a part-time job through a friend, but be sure to check the details of the work and the remuneration in advance and make sure that there are no problems.



Campus life

Events. Daily file

